



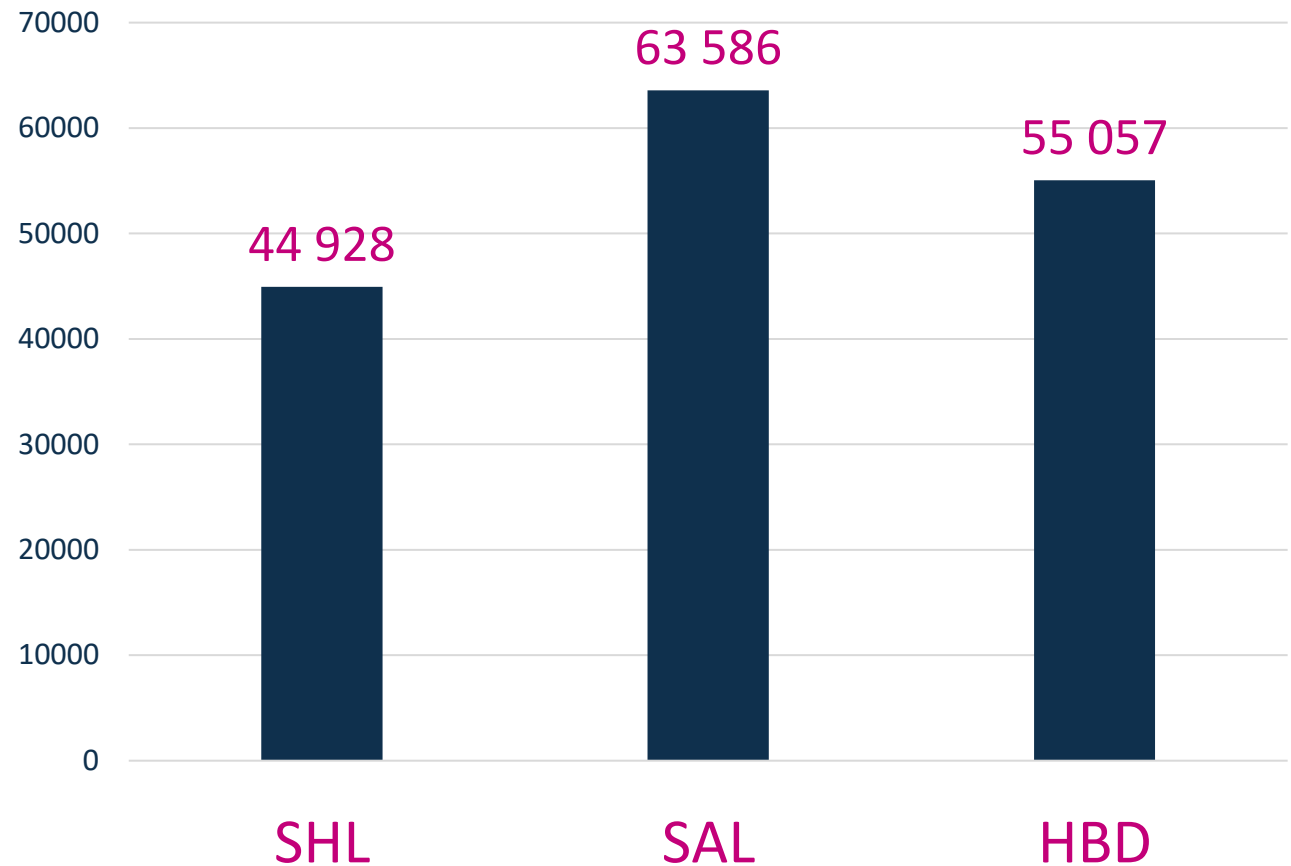
KRK Airport Slot Coordination

Start of Season S25

Warsaw | April , 2025

www.pansa.pl

Cleared Airport Slots S25

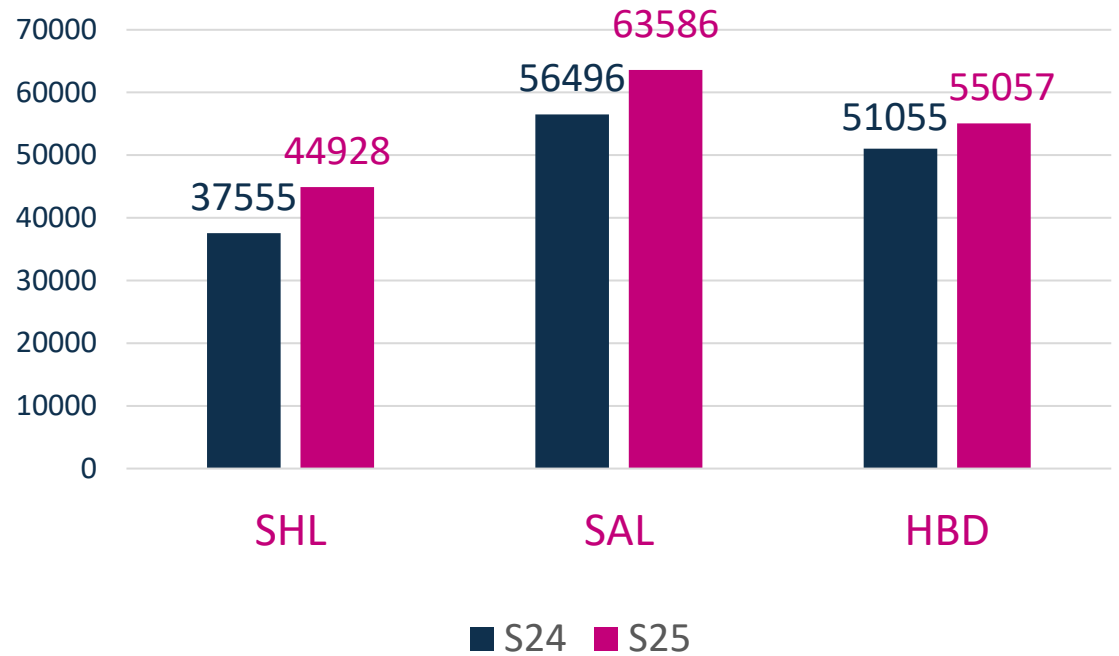


SHL
44 928

SAL
63 586

HBD
55 057

Cleared Airport Slots S24 vs S25



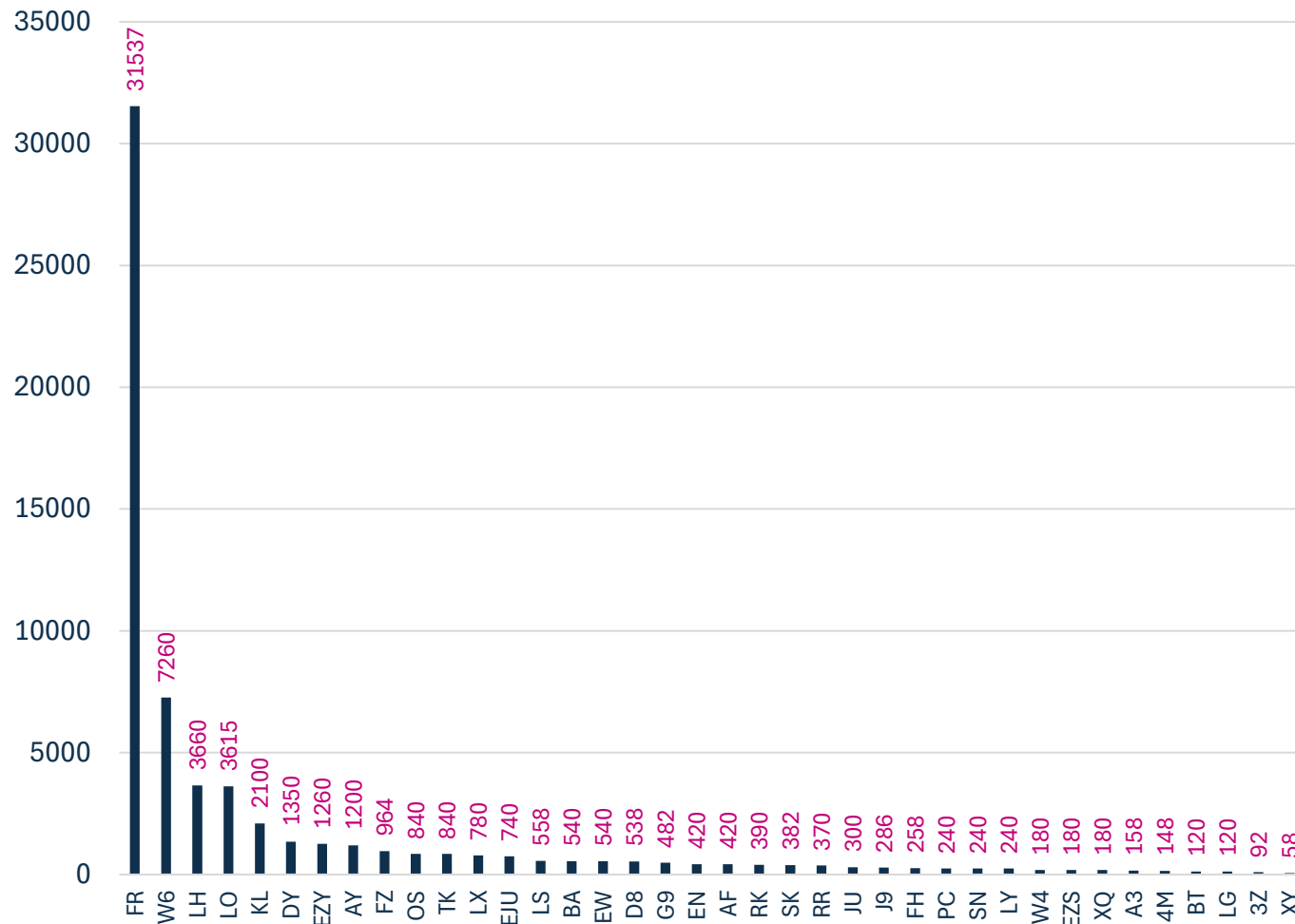
	S24	S25	CHANGE %
SHL	37 555	44 928	20%
SAL	56 496	63 586	13%
HBD	51 055	55 057	8%

Airport Slots SAL S25

REASON CODE		%
R60/5	3 153	4,96%
T60/5	3 741	5,88%
OK	56 692	89,16%
TOTAL	63 586	100%

Number of flights by Airlines

SAL
S25

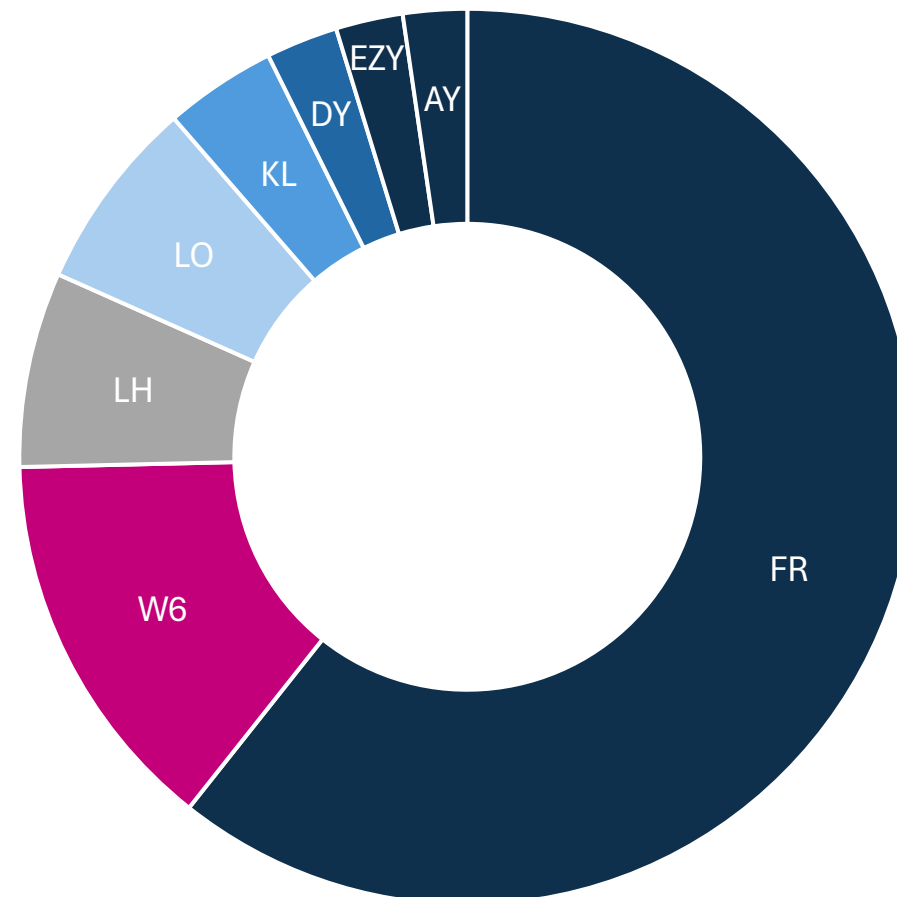


Top 8 Airlines

(over 1000 slots)

SAL

S25



S25 System Parameters

Runway opening hours	
Monday - Sunday	03:30 – 23:00 UTC

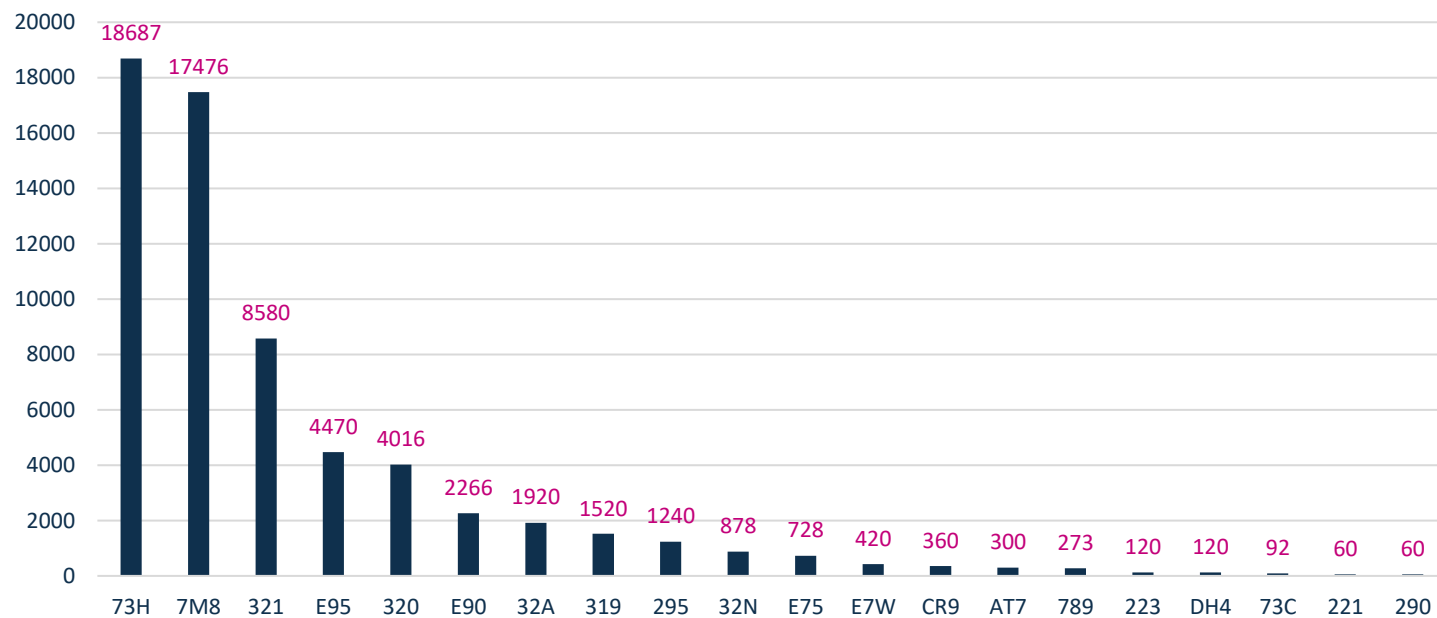
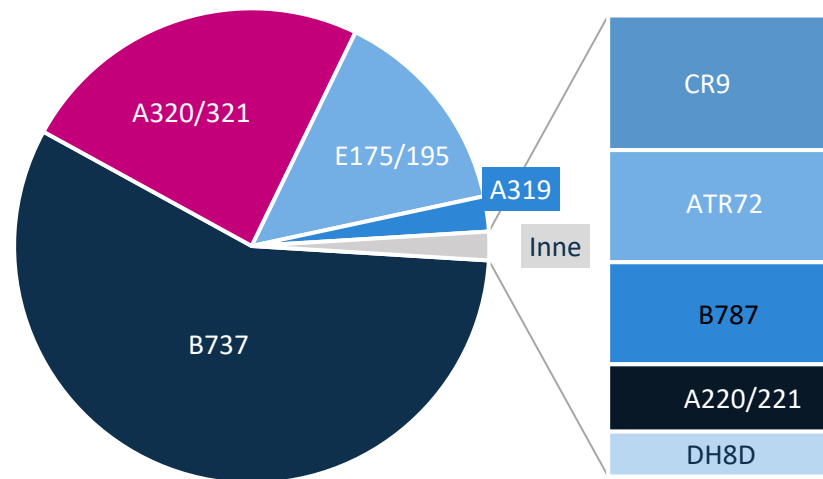
R60 within rolling 5 minutes		
Ops/h	Arrivals	Departures
SCH	16	11
NSCH	7	5
Total	16	14

T60 within rolling 5 minutes		
Pax/h	Arrivals	Departures
SCH	2200	1220
NSCH	1155	1020
Total	2200	1820

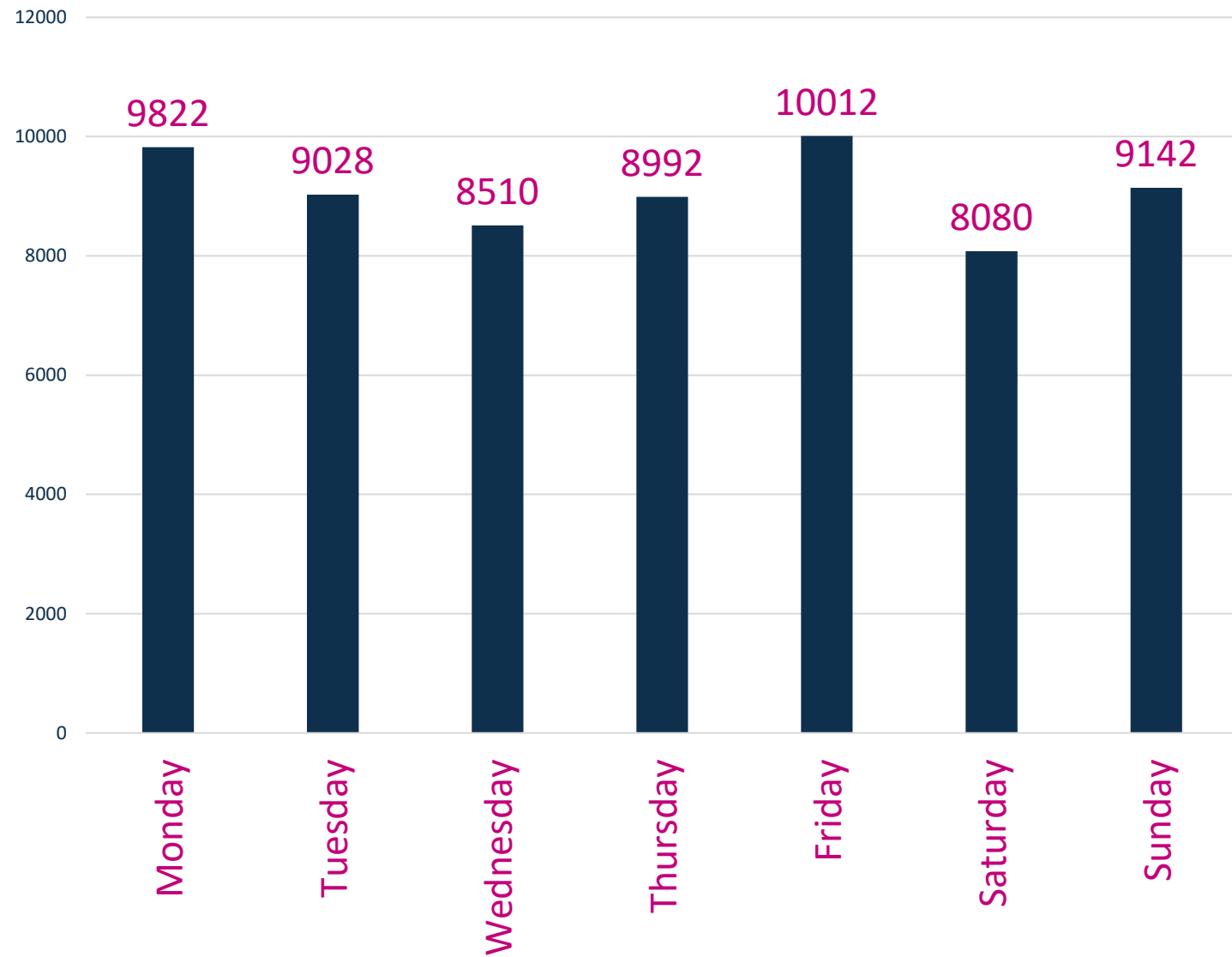
Simultaneous occupancy of the parking positions						
CODE D/E	0	1	2	3	4	5
CODE A/B/C	30	28	26	24	22	20

AC Types SAL S25

AC Type Series



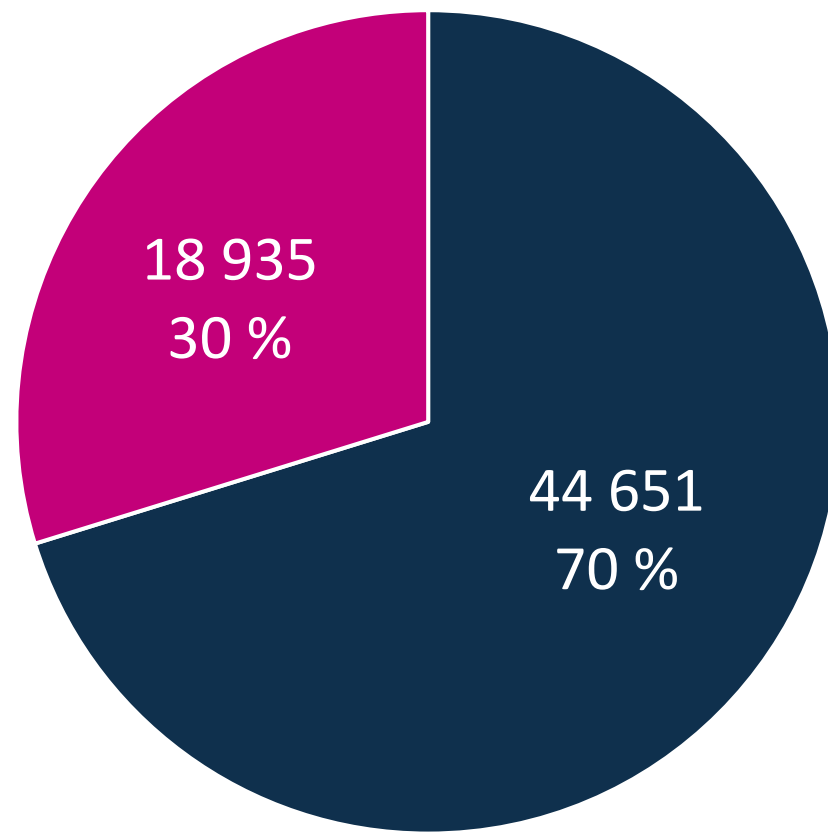
Number of operations
by day of the
week
SAL
S25



Flight types

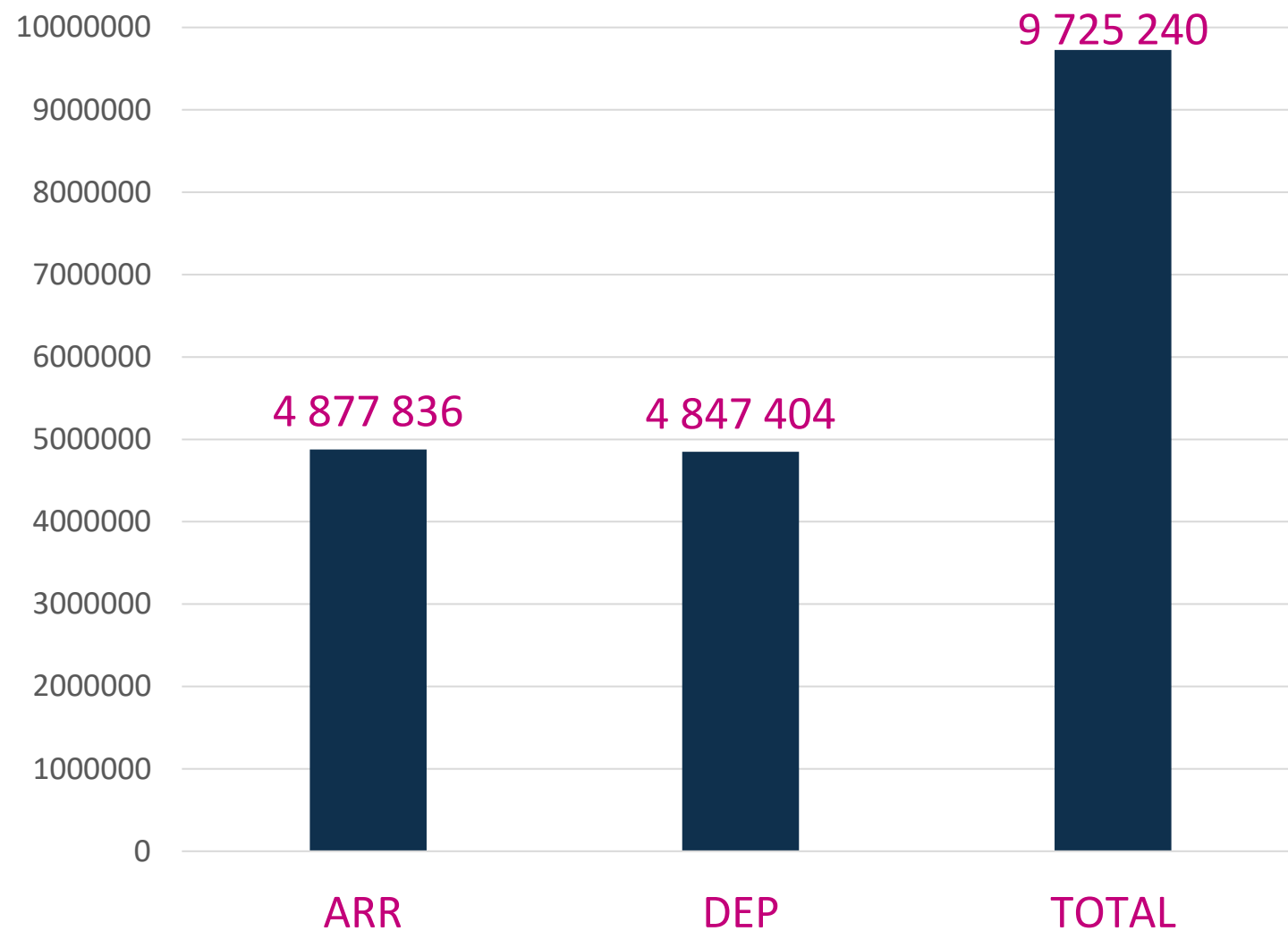
SAL

S25

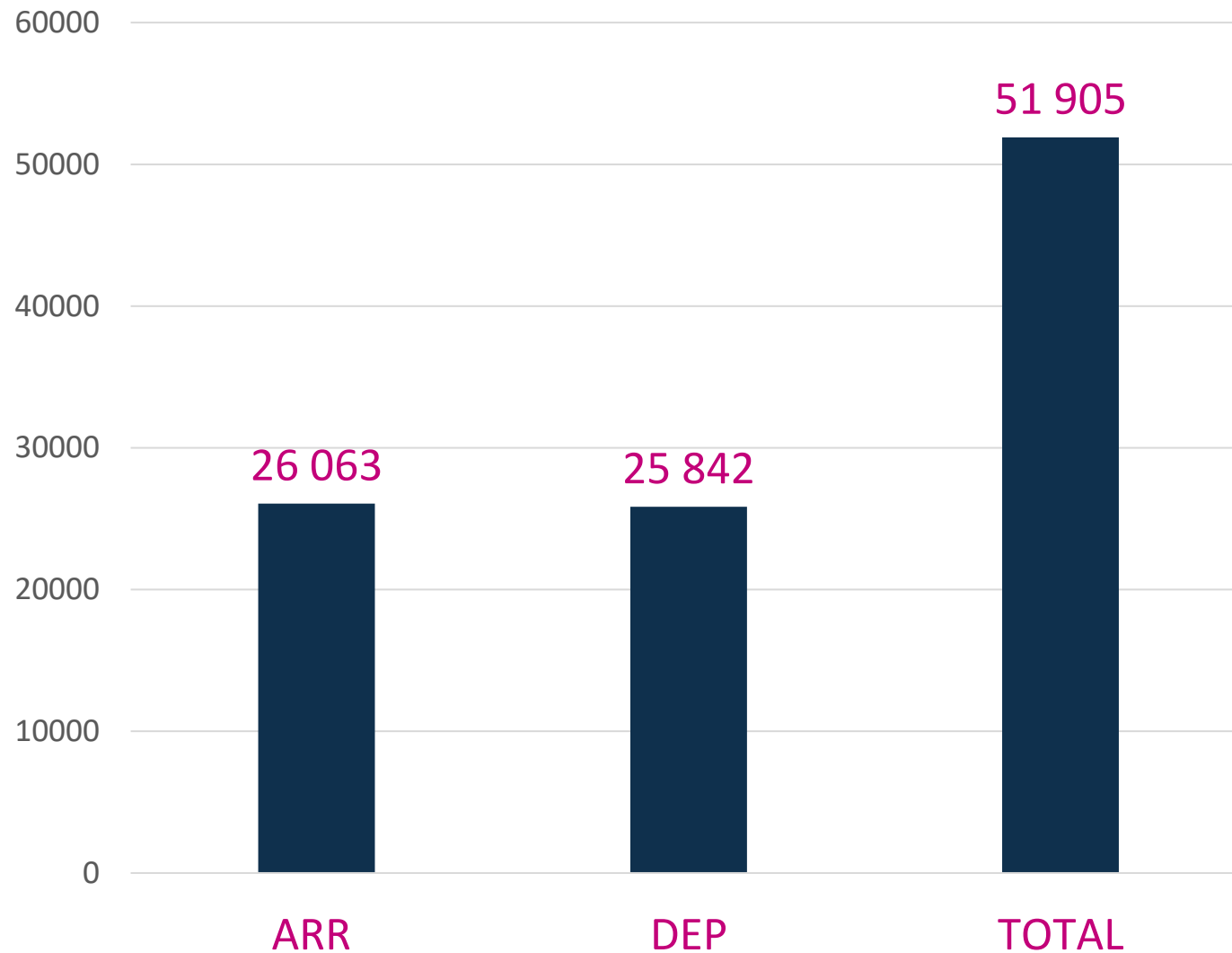


■ Schengen ■ Non-Schengen

Seasonal number of passengers SAL S25



Maximum daily
number of
passengers
SAL
S25



The logo for PANSNA, featuring the word "PANSNA" in a white, rounded, sans-serif font. The letter 'P' is stylized with a curved tail that loops back towards the left. The background is a solid blue color with several light blue, abstract, wavy lines that create a sense of movement and depth.

PANSNA

Thank You

Warsaw | April, 2025

www.pansa.pl