



KRK Airport Slot Coordination

Start of Season W25

Warsaw | November , 2025

www.pansa.pl

W25 System Parameters

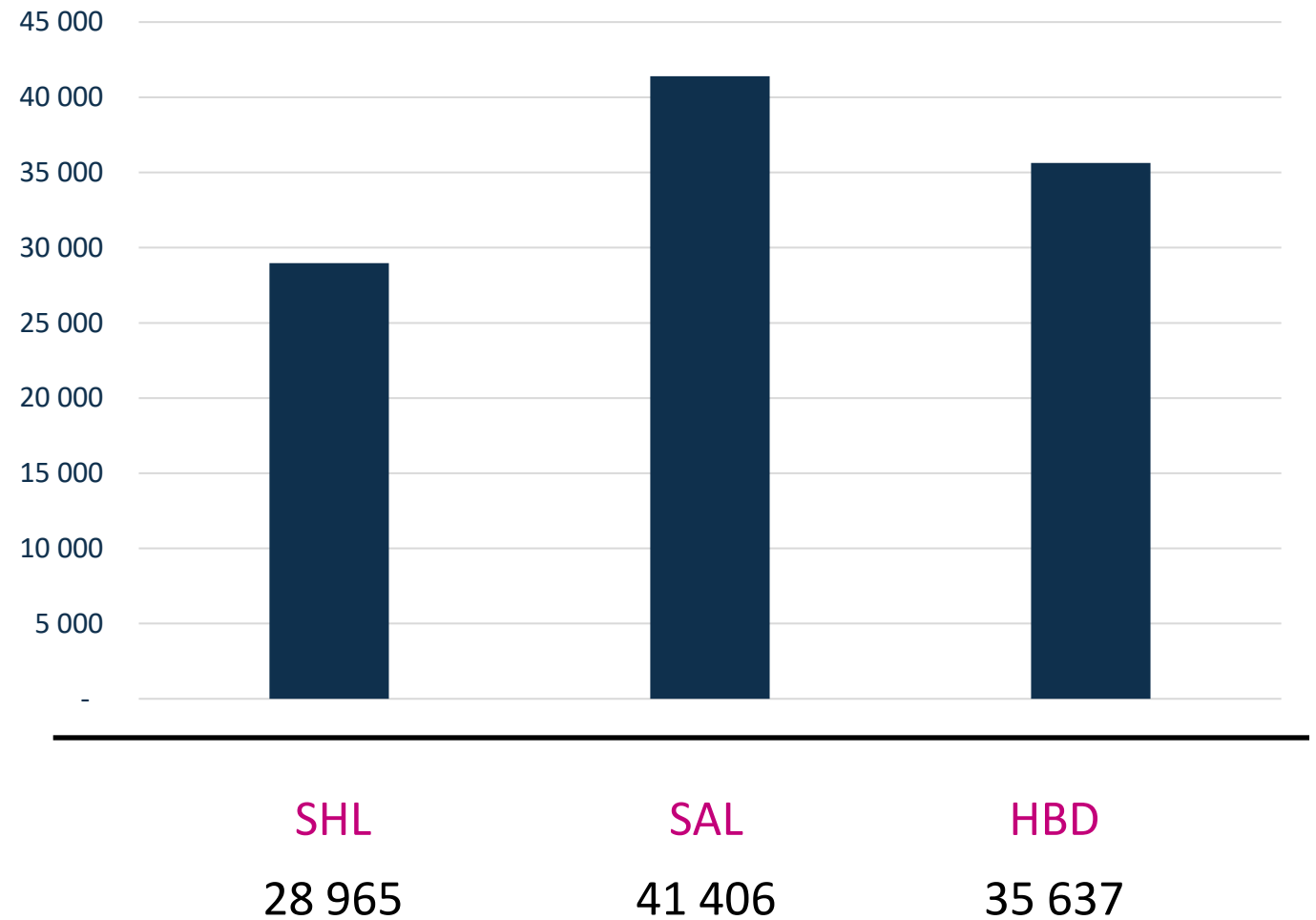
Runway opening hours	
Monday - Sunday	04:30 – 00:00 UTC

R60 within rolling 5 minutes		
Ops/h	Arrivals	Departures
SCH	18	11
NSCH	7	5
Total	18	14

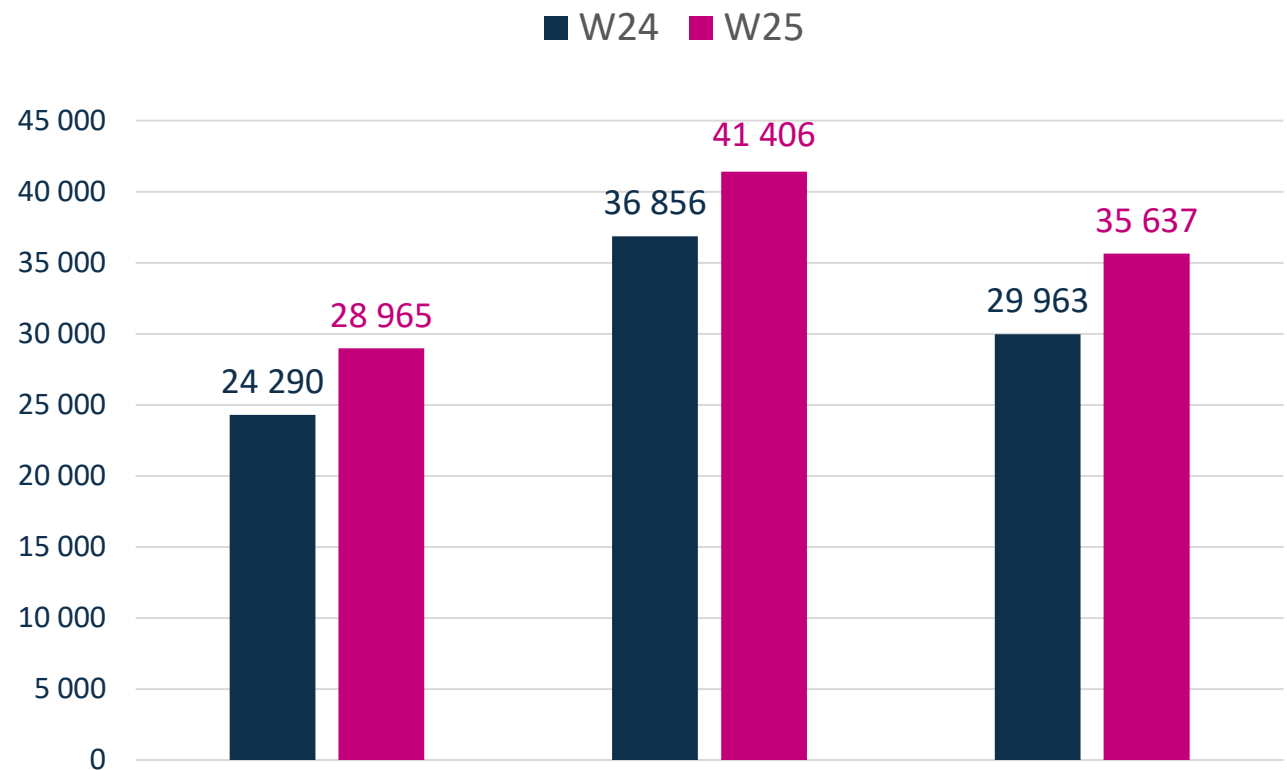
T60 within rolling 5 minutes		
Pax/h	Arrivals	Departures
SCH	2700	1220
NSCH	1155	1020
Total	2700	1820

Simultaneous occupancy of the parking positions						
CODE D/E	0	1	2	3	4	5
CODE A/B/C	30	28	26	24	22	20

Cleared Airport Slots W25



Cleared Airport Slots W24 vs W25



SHL
+ 19 %

SAL
+ 12 %

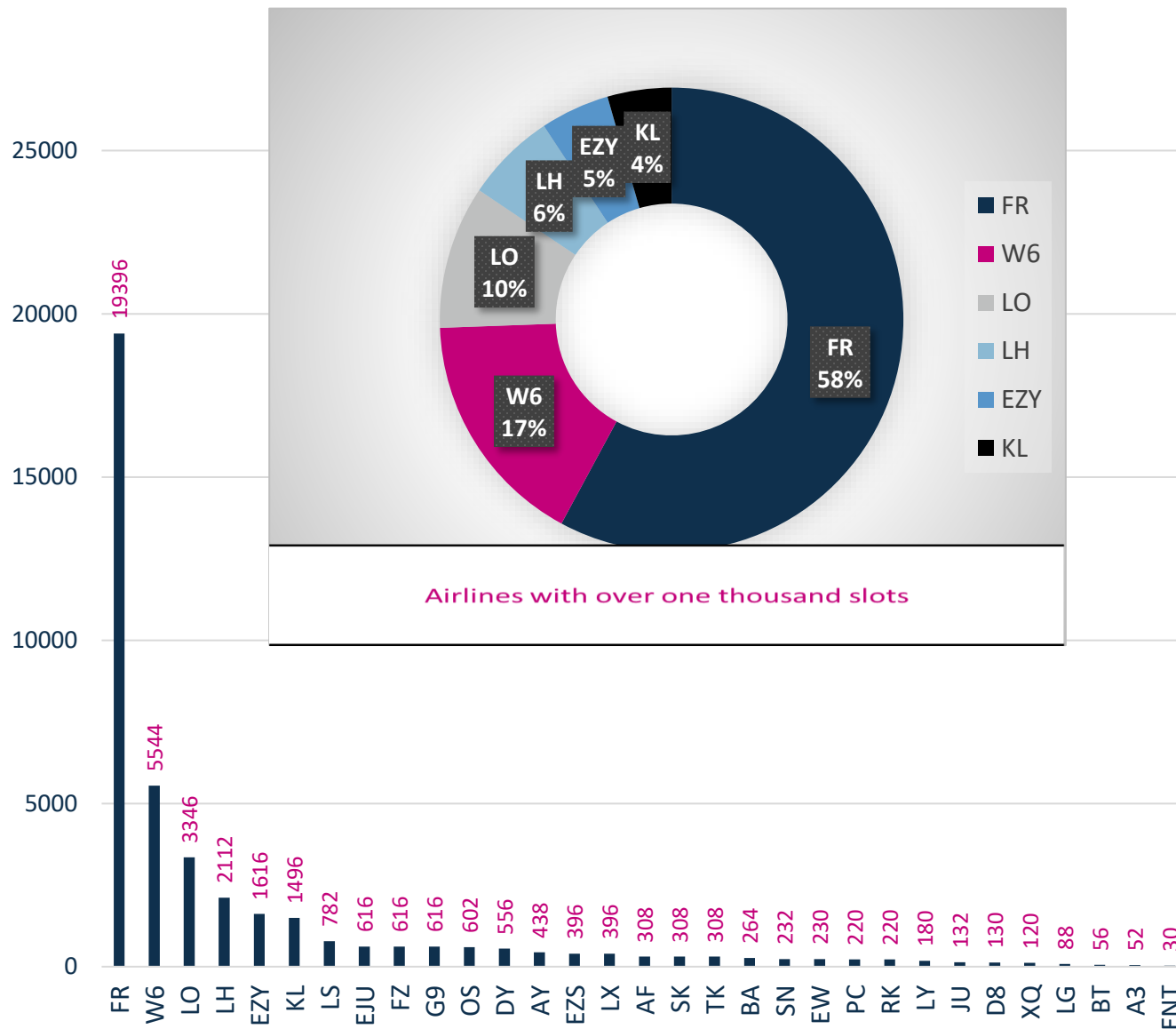
HBD
+ 19 %

Airport Slots SAL W25

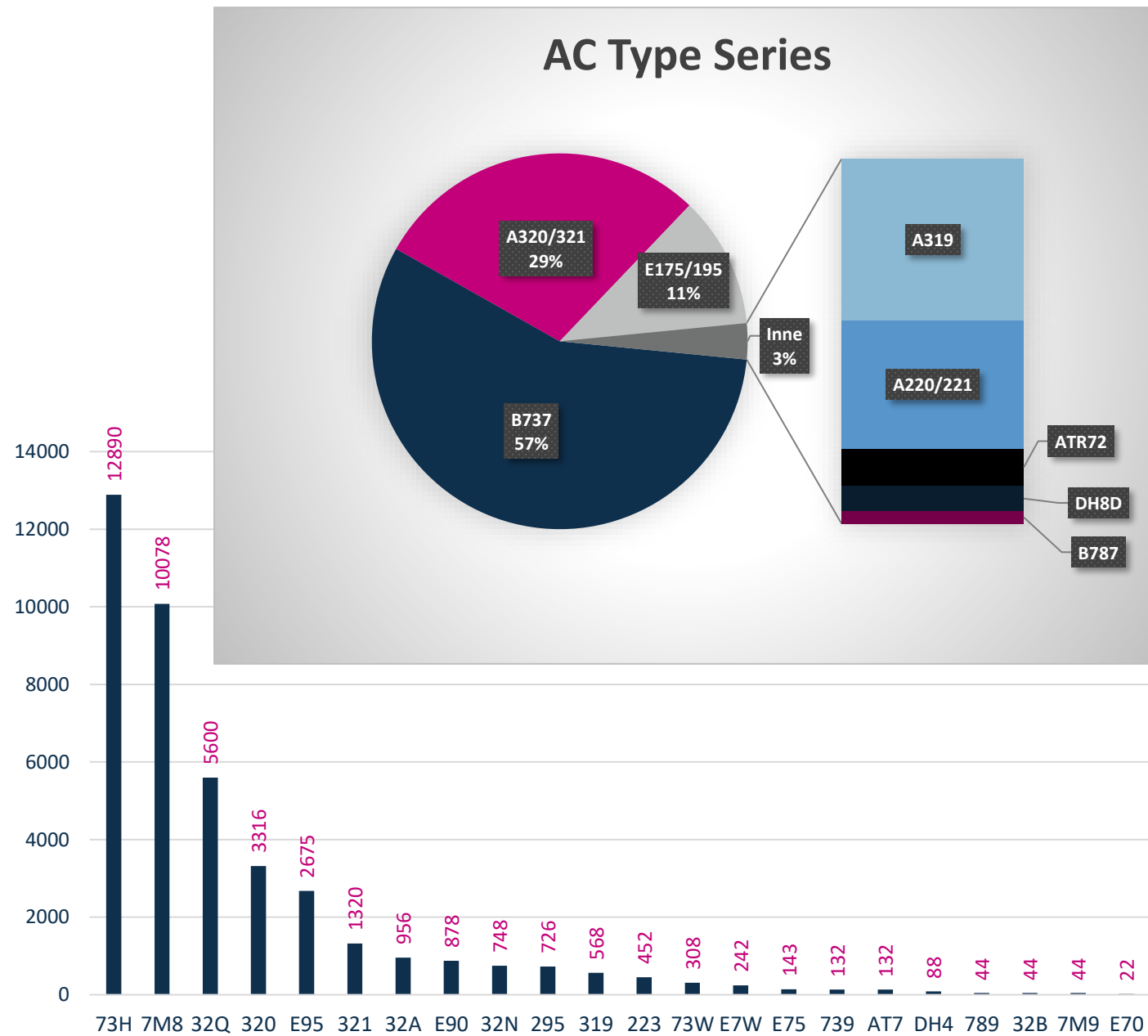
REASON CODE		%
R60/5	1 391	3,36%
T60/5	866	2,09%
OK	39 149	94,55%
TOTAL	41 406	100%

Number of flights by Airlines

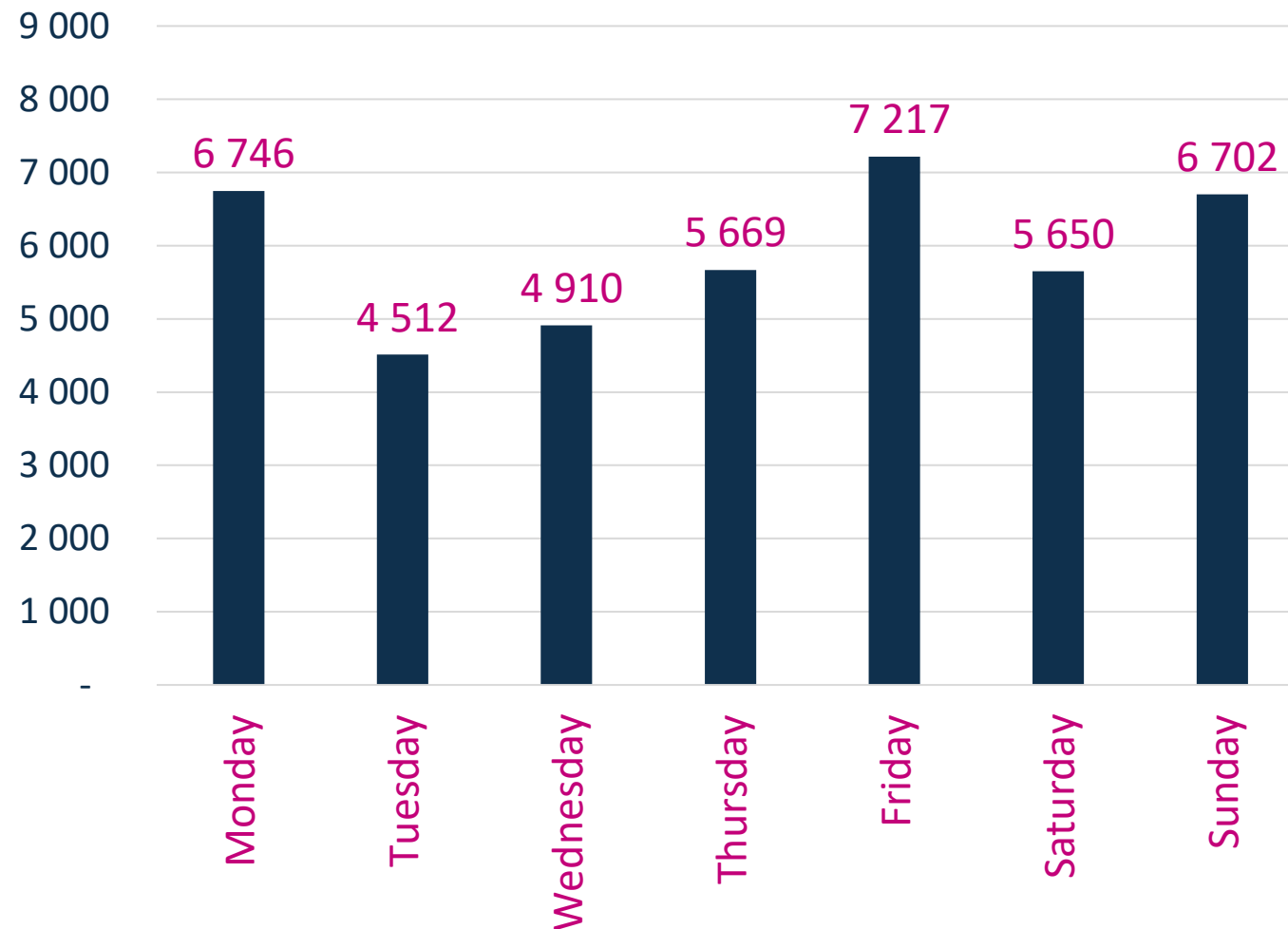
SAL
W25



AC Types SAL W25



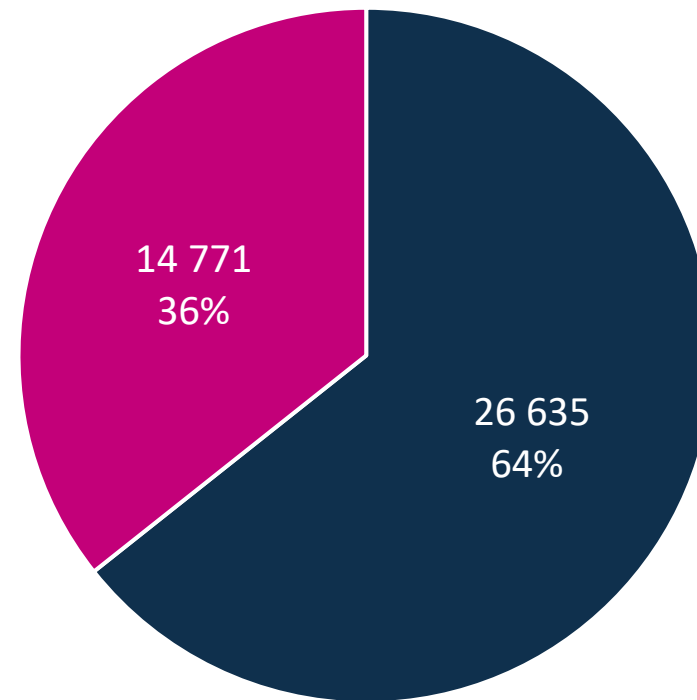
Number of operations by day of the week SAL W25



Flight types

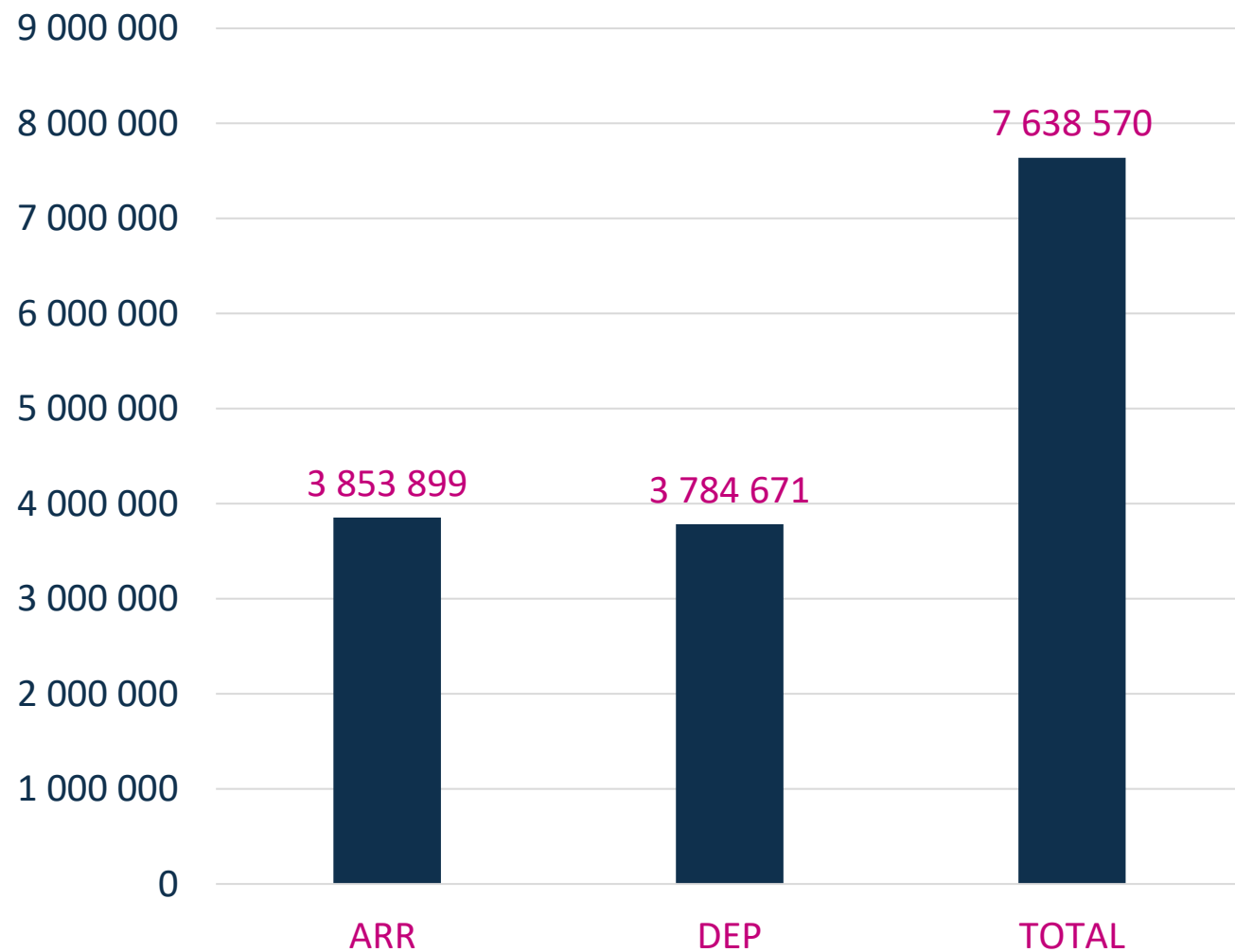
SAL

W25

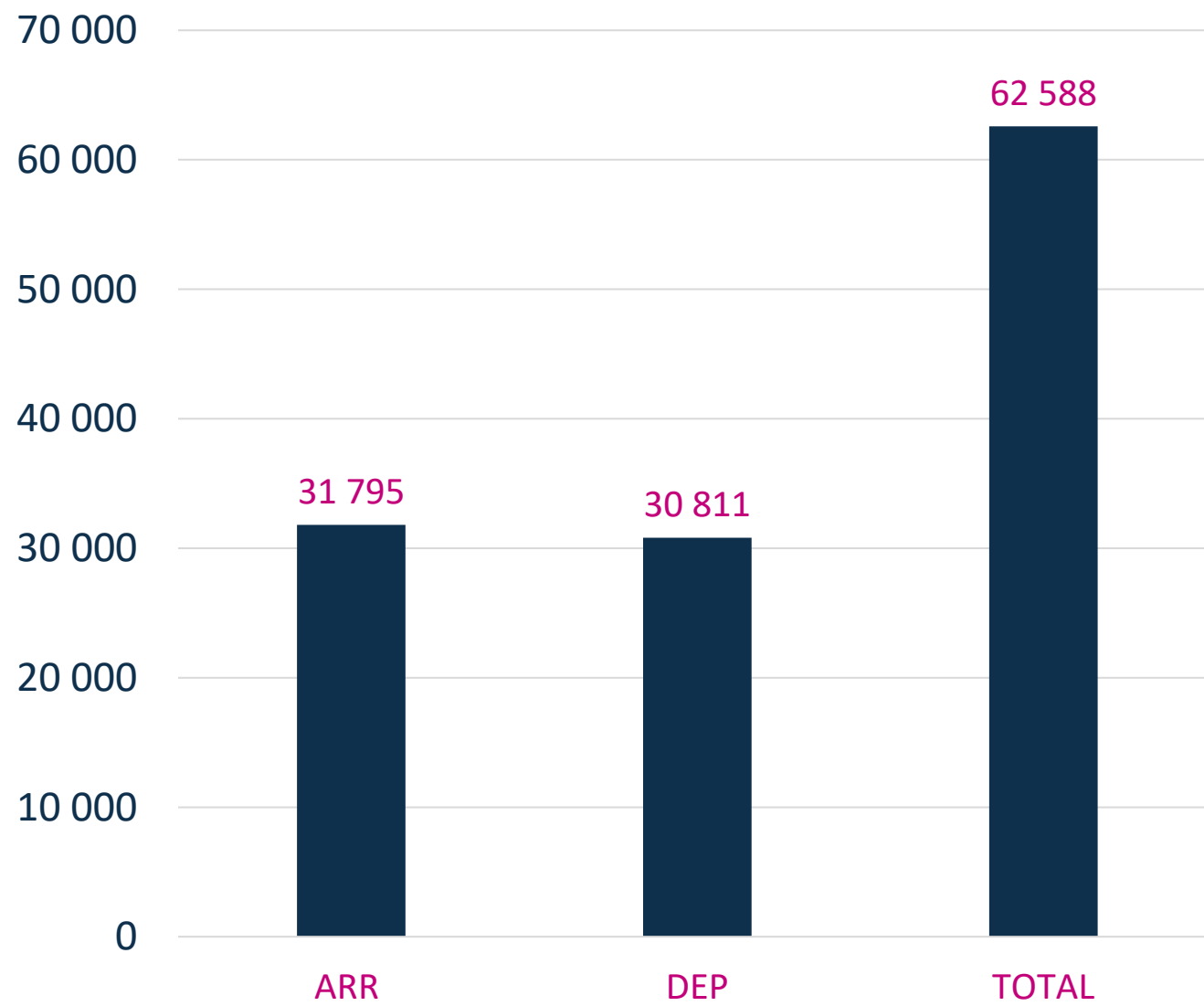


■ Schengen ■ Non-Schengen

Number of passengers SAL W25



Maximum daily
number of
passengers
SAL
W25



The logo for PANSAN, featuring the word "PANSAN" in a white, rounded, sans-serif font. The letter 'P' is stylized with a curved tail that loops back towards the left. The background is a solid blue color with several light blue, abstract, wavy lines that create a sense of movement and depth.

PANSAN

Thank You

Warsaw | November, 2025

www.pansa.pl